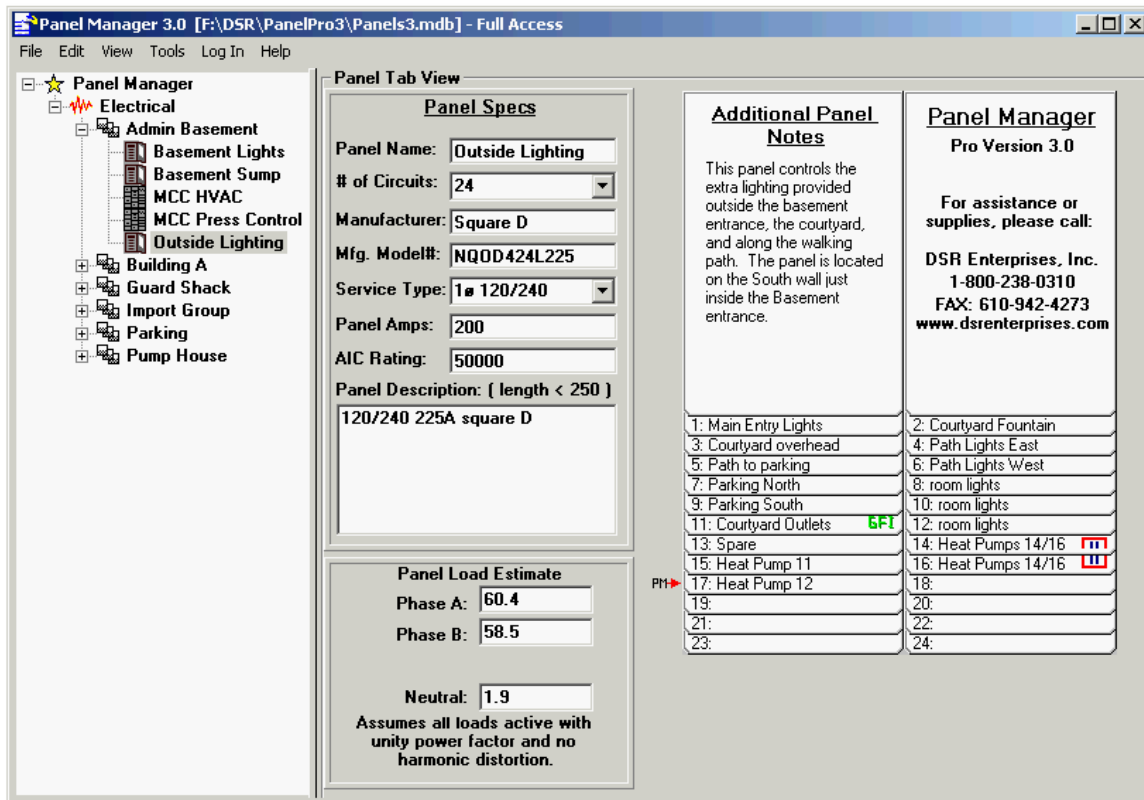


Panel Manager is a great way to increase your maintenance productivity and lower your chances of accidents. *New to the 2005 NEC Code, Section 408.4 requires, “Circuit Directory or Circuit Identification.* Every circuit and circuit modification shall be legibly identified as to its clear, evident, and specific purpose or use. The identification shall include sufficient detail to allow each circuit to be distinguished from all others. The identification shall be included in a circuit directory that is located at the face or inside of the panel door in the case of a panelboard, and located at each switch on a switchboard.”

Our staff will work within your facility tracing questionable circuits and verifying the existing used circuits to become code compliant, as well as, making it quicker and safer for individuals to find circuits that need to be locked and tagged before working on equipment. In addition to recording and printing the panel circuits we can collect and record the following information for each panel: Panel manufacturer, model number, breaker styles used, service type, and load current on each circuit with an estimated panel full load.



We print out a “flip card” copy of the schedule where a better detail of the circuit is recorded and install these in each panel. In addition, we provide the customer with an electronic file (Excel format) of all panels making it more efficient to review available panel spaces and breakers for adding future equipment/circuits. Once accomplished, updating and maintaining current records of panels becomes a very small task.

Larger Facilities where a combination of maintenance employees and contractors are working on electrical systems would benefit the most. This service gets you started with a clean list of panel directories and allows enough space to make corrections or add equipment/circuits to panels, unlike the existing Panel Cards supplied by manufacturer, giving your employees the most accurate information which reduces the likelihood of interrupting power to sensitive equipment or wasting time tracing out the breakers. All of this creates a much safer working environment.